

## Purpose-built technology solutions for a wide range of applications

### M2M / IoT Solutions CONPROSYS™

Flexible support for building your M2M / IoT system with various of products, software and services.

#### IoT Gateway

##### M2M Controller

Establish an IoT environment quickly and easily with this base model

- Supports OPC UA / MTConnect
- Integrated type controller includes a wide variety of I/O interfaces
- Configurable type controller supports up to 20 various I/O modules

##### M2M Gateway

PLC / CNC data logger

- Compatible with major PLC / CNC manufacturers
- Supports OPC UA / MTConnect
- Links up to 10 systems and 256 register groups

##### Signal Tower Light Monitor

EnOcean based wireless sensor for CONPROSYS controllers

- Easy installation and setup
- Power saving wireless (EnOcean) standard
- Ready to use monitoring screens

#### Function

#### CONPROSYS VTC (Visual Task Control)

- Up to 30 kinds of function-icons support you scripting easily
- Up to 20 main tasks and 10 subtasks are supported
- Data linking with CONPROSYS HMI

Easy Processing and Control

Device setting, data saving, and script debugging are completed with web browser

Support multiple platforms (Windows, Android, iOS, MAC, Linux)

#### CONPROSYS HMI (Human-Machine Interface)

- Creating screens with a variety of prepared display items
- Data linking and checking can be performed at the same time as editing the screen
- Enables visualization just with CONPROSYS

Monitoring

Device setting, data saving, and script debugging are completed with web browser

Support multiple platforms (Windows, Android, iOS, MAC, Linux)

#### Data Transmission

Easily transmit data over mobile wireless internet

#### Supports OPC UA Standard

#### Modbus Master

#### PLC Master

#### PAC (Programmable Automation Controller)

##### PAC series

CODESYS runtime system pre-installed programmable controller

- Either EtherCAT or Modbus supported models
  - Compatible with both integrated and configurable models
- 

##### EtherCAT slave

EtherCAT features allow I/O modules to be controlled from a distance. Up to 16 I/O modules can be stacked to one slave unit.

- EtherCAT slave unit is compliant with EtherCAT Modular Device Profile (MDP) standard (ETG.5001.1).
  - Daisy chain connection
- 

#### Remote I/O

##### CONPROSYS nano Slave type

- 2 x LAN (built-in switch) model
  - PC / PLC-based centralized control
  - A wide range of I/O modules can be used as remote I/O for communication devices having Modbus master functions.
- 

##### CONPROSYS nano Software PLC type

- Suitable for distributed control
  - CODESYS runtime is built-in (IEC 61131-3 standard compliant)
  - 4 x I/O module slots
- 

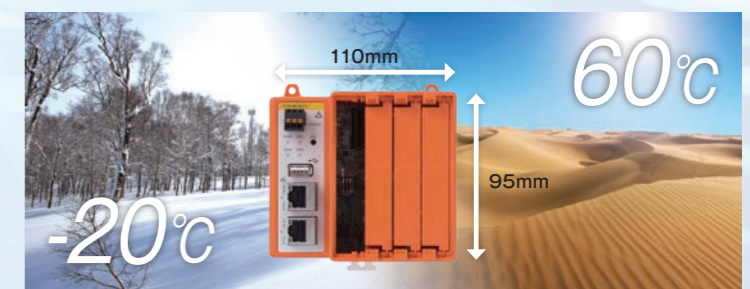
##### IO-Link Master CP5L-08P1EN

- Simple connection with IO-Link sensors
  - Supports multiple field bus protocol
  - IP67 dust-proof, drip-proof design
- 

#### Supports all kinds of signals

- Voltage I/O
  - Current I/O
  - Temperature input
  - Counter
  - Digital I/O
  - Relay Output
  - RS-485 Communication
- 

#### Good for all kinds of fields



#### Software

##### Web HMI/SCADA Software CONPROSYS HMI System (CHS)

- HTML5 technology-based
- Access anywhere
- Real SCADA realized by web system
- Support CONPROSYS IoT devices
- Support MQTT (Built-in broker)
- Easy online purchase

MyCommerce A Digital River Company

Visit our demo page of CONPROSYS HMI System (CHS)!

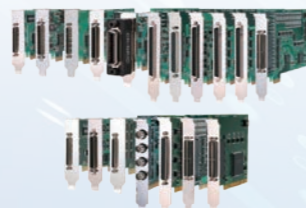
# DAQ / Wireless LAN Products

## Measurement and Control

Extensive product offering to meet advanced control and communication requirements.

### PCI Express / PCI Cards

- From low price type to high function type available. More than 400 kinds of comprehensive lineups that can correspond to various equipment I/O. Windows and Linux API driver software includes convenient utility and sample programs. \*Some products do not support Linux.
- Using our dedicated driver software, many products can also be used with the electronic measurement and analysis software MATLAB or LabVIEW. \*Check our website for details.



### HAT-Size Card for Raspberry Pi®

- Stacked connection up to 8 boards available
- Enables to utilize valuable development assets with multi-platform support



### USB Modules

Adds functionality to PC through USB interface



- Compatible with USB1.1 and USB2.0
- Wide variety of function modules available
- Windows and Linux driver libraries

### Wireless I/O Modules

- Possible to input voltage signals or input and output digital signals from about 1km aparted terminals wirelessly.
- Highly reliable mesh communication
- Windows driver library, API-PAC (W32) is available for free.
- Modules for US, EU, and China are ready



### Bus Expansion Units

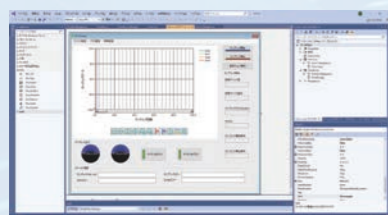
- Ideal for systems that need more PCI Express / PCI cards than the computer expansion bus slots.
- To solve the expansion slot / power capacity shortage problems.



\* For Windows environment, different interfaced devices use the same API driver software download free of charge.

## Application Development and Support Tools

### Low-code development of measurement systems DAQfast for Visual Studio

[Free download](#)


Quick app development with three easy steps

- STEP 1 Select components
- STEP 2 Associate components in the property settings panel (no code)
- STEP 3 Compile & execute

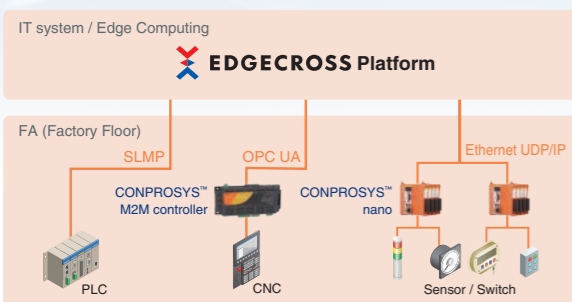
- Sophisticated components for inspection measurement and data recording apps.
- Native support for IDE Visual Studio, the standard Windows app development environment.

### LabVIEW Data Acquisition Library DAQfast for LabVIEW

[Free download](#)


- Polymorphic VI adopted.
- User friendly design

### Leveraging DAQ boards on Edgecross platform DAQfast for Edgecross



Data collection and read/write functions are available for devices with analog I/O, digital I/O, counter input, and Modbus slave function.

### Pattern generator / Logic analyzer C-LogicDesigner

[Free download](#)

- Logic pattern creation functions (such as copy, paste, swap, and automatic generation) based on an intuitive and easy-to-understand GUI
- High-speed logic analyzer functions with sampling at up to 50MHz and pulse generator functions



## Network

### Wireless LAN Access Point / Stations / Converter

Access Point



#### FXA3000

- This product can be switched between access point (master station), station (slave station), and repeater operation modes.
- Supports an AC adapter (sold separately), DC power supplies from 5 to 30 VDC, and power supplied from the LAN connector.

Embedded Wireless LAN Board



#### FXE3000

- The proprietary encryption technology "WSL" available with WPA2/WPA and WEP
- Supports a various power supply
- Supports IEEE802.11n/a (W52/W53/W56)/b/g standards

Access Point for China



#### FXS3001-CN

- Wireless LAN converter which has been certified by the Radio Law of China.
- Compliant with 4 standards of IEEE802.11n / a (W52 / W58) / b / g

Media Converter LAN ↔ RS-232C



#### RP-COM(FIT)H

- Media converter which converts serial communication (RS-232C) to Ethernet communication.
- Up to 7 channels available for RS-232C (with 3 units of COM-2(FIT)GY).

### Industrial Ethernet Switches

1000BASE-T 8-port PoE  
~power supply function installed~


#### SH-9008AT-POE

- Wide range DC power input (12 to 57VDC)
- Supports -35 to 70°C / -31 to 158°F ambient temperature
- IEEE802.3af / IEEE802.3at compliant
- Built-in redundant power supply and power supply abnormality detection switching circuit

1000BASE-T 8-port  
~automatic power adjustment function~


#### SH-9008H-FIT

- Supports 0 to 50°C / 32 to 122°F ambient temperature
- Reduces power consumption by up to 80% with automatic power adjustment function

100BASE-TX 8-port



#### SH-8008F

- Wide range DC power input (8 to 35VDC)
- Supports -20 to 60°C / -4 to 140°F ambient temperature
- Redundant power supply, built-in power reverse wiring circuit

100BASE-TX 5-port



#### CPS-HBL-8005F

- Wide range DC power input (8 to 35VDC)
- Supports -20 to 60°C / -4 to 140°F ambient temperature