
Bracket for Wireless I/O products

BRK-WQ-Y User's Guide

CONTEC CO., LTD.

Thank you for purchasing this product.

This is a metal fitting to fix CONTEC Sub-GHz Wireless I/O Terminal Series for DIN rail.

Corresponding products

- DIO-0404LY-WQ
- GW1-ETH-WQ
- AI-1004LY-WQ

Product Configuration

This product is configured as follows. Be sure you have received all of the components listed. If any components are missing or broken, contact the store where you purchased this product.

Your registration card is essential for us to notify our customers of new products. Be sure to fill it out completely and return it.

- Bracket...1
- User's Guide (this document)...1
- M2 x 5 sems screw...2

Using Method

1. Attach the BRK-WQ-Y to the Sub-GHz wireless I/O terminal product, and secure them using the attached M2 x 5 sems screws.
2. Pull down the fixed hook at the bottom to unlock, and hang the product on the upper part of the DIN rail, and press it to the lower side of the DIN rail. Then, push up the hook to lock.

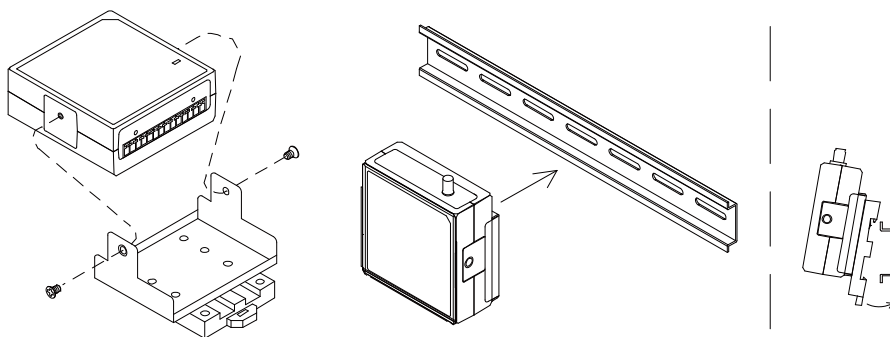


Figure 1. Using Method

External View and Dimensions

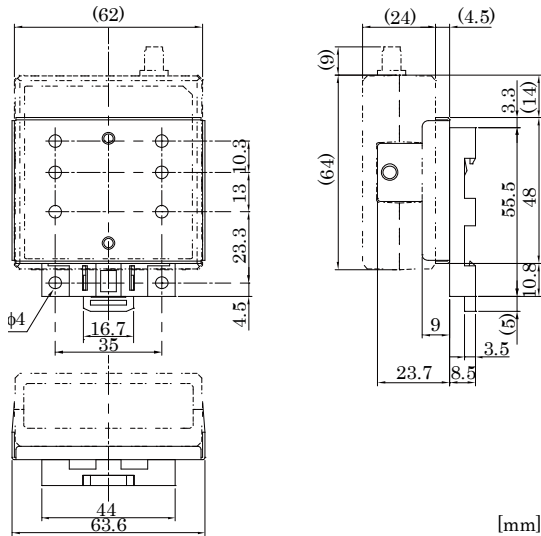


Figure 2. External View and Dimensions

Specifications

Table 1. Specifications

Item	Specification
Weight	45g

⚠ CAUTION

- The specifications of this product are subject to change without notice for quality improvement. Even when using the product continuously, be sure to read the manual and understand the contents.
- Regardless of the foregoing statement, CONTEC assumes no responsibility for any errors that may appear in this document or for any results of using the product.
- Brand and product names are trademarks of their respective holder.
- All relevant issues have been considered in the preparation of this document. Should you notice an omission or any questionable item in this document, please feel free to notify CONTEC CO., LTD.

Copyright 2017 CONTEC CO., LTD. ALL RIGHTS RESERVED.

CONTEC CO., LTD.

3-9-31, Himesato, Nishiyodogawa-ku, Osaka 555-0025, Japan

<https://www.contec.com/>

August 2017 Edition

NA05810 (LYVE901)

[08312017]

No part of this document may be copied or reproduced in any form by any means without prior written consent of CONTEC CO., LTD.