

READ ME FIRST

BOX-PC

Product Guide

BOX Computer


BX-T3000 Series

CONTEC CO., LTD.

Thank you for purchasing this product. The product you have purchased consists of the following items.
Check, with the following list, that your package is complete.
If you find any item either missing or damaged, please contact the sales representative you purchased the product from.
For appropriate usage, be certain to read the related materials of published on our website before using this product.
Please download various software tools from the website.

Warranty

This product has a warranty period of 3 years.
Before using the product, be sure to read the warranty and detailed warranty provisions. They can be downloaded from the Contec website.




Name	Contents	How to get
Warranty, Warranty Provisions	This describes the warranty and warranty provisions. *This product has a warranty period of 3 years.	Download (PDF)

URL <https://www.contec.com/support/warranty/>

MICROSOFT SOFTWARE LICENSE TERMS

For types with a pre-installed OS, you have to agree to the Microsoft Software License Terms. Before using the product, be sure to read this document. It can be downloaded from the Contec website.




Name	Contents	How to get
MICROSOFT SOFTWARE LICENSE TERMS	This describes your rights for and conditions on the usage of Windows software. Before using the product, you have to agree to the contents contained in this document.	Download (PDF)

URL <https://www.contec.com/support/useterms/>

Manual

The following manuals are available for this product. Visit our website and download them by entering the type in "Downloads".



Name	Contents	How to get
Product Guide (This sheet)	This lists the product configuration and describes the precautions.	Included in the package (Printed matter)
Reference Manual	This describes the hardware aspects such as functions and settings.	Download (PDF)
IPC Precaution List	This describes the precautions when using the product.	Download (PDF)
Manual for OS Pre-installed Type *1	This describes the basic information of OS, and the procedures of setup and recovery.	Download (PDF)
Precautions on using Wireless LAN *2	This describes the precautions when using the wireless LAN.	Download (PDF)

*1 Refer to pre-installed type only.
*2 Refer to wireless LAN type only.


URL <https://www.contec.com/download/>

OS Recovery Media

If you have purchased a type with a pre-installed OS and you require recovery media, contact your retailer.

Device Driver

If you have purchased a type without OS and you require device driver, visit our website and download them by entering the type in "Downloads".

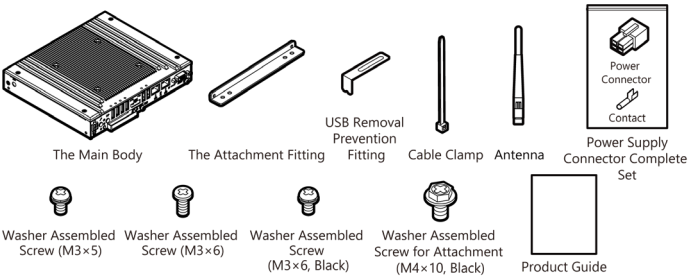


URL <https://www.contec.com/download/>

1. Included Items

This product consists of the items listed below.
Check, with the following list, that your package is complete. If you discover damaged or missing items, contact your retailer.

	BX-T3000-Jx0xxxx [Base Type]	BX-T3000-Jx0xxxxWxxx [OS Pre-install Type]	BX-T3000R-Jx0xxxxWxxx [OS Pre-install, Wireless Type]
Name	Pcs.	Pcs.	Pcs.
The Main Body	1	1	1
The Attachment Fitting	2	2	2
USB Removal Prevention Fitting	6	6	6
Cable Clamp	2	2	2
Washer Assembled Screw (M3x5)	6	6	6
Washer Assembled Screw (M3x6)	2	2	1
Washer Assembled Screw (M3x6, Black)	4	4	4
Washer Assembled Screw for Attachment (M4x10, Black)	4	4	4
Power Supply Connector	1	1	1
Complete Set Contact	4	4	4
Antenna	-	-	2
Product Guide (this sheet)	1	1	1



CONTEC CO., LTD.

3-9-31, Himesato, Nishiyodogawa-ku, Osaka 555-0025, Japan

<https://www.contec.com/>

The information contained in this document is subject to change without prior notice.
No part of this document may be copied or reproduced in any form by any means without prior written consent of CONTEC CO., LTD.
NA08287 (LYZU583) 12222022_rev3 [10082021]