

7" Smart Industrial Display Kit CI-DK070P

7" LCD with 800 x 480 WVGA Resolution

**-10°C ~ 60°C Wide Operating
Temperature**

500 Nits Brightness with LED Backlight

PCAP Touch with USB Interface

LVDS Interface

LED driver Board Built-In

**US-Based Touch Screen Integration and
Support**

Long-Life Industrial Grade LCD Panel

Compatible with Window and Linux OS

CI-DK070P Specifications

LCD

Model	CI-DK070P
LCD Size/Type	7" LCD
Resolution	800 x 480 WVGA
Display Active Area	152.4 x 91.44 mm
Backlight Unit	LED
Panel Brightness	500 cd/m ²
Contrast Ratio	800:1
Response Time	25 msec
Viewing Angle	178/178
Signal Interface	LVDS
Power Consumption	3.46 W
Dimensions	170 x 110 x 6.0 mm

Touch

Touch Type	Projected Capacitive Touch (PCAP)
Transparency	≥ 83%
Touch Structure	G+G
Dimensions	178 x 116 x 3.2 mm

Bonding

Bonding Method	Air or Perimeter Bond
-----------------------	-----------------------

Mechanical

Overall Dimensions	170 x 110 x 9.7 mm (6.693" x 4.331" x 0.382")
---------------------------	---

Controller

Controller Type	Chip-on-Board (COB)
Input Supply Voltage	5V (typ.)
Operating Voltage	Vbus to GND: 4.4V min. And 5.5V max. Vcc to GND: 2.7V min., 3.3V max.
Controller IC	ILI2511
Touch Interface	USB 2.0 Full Speed
Resolution	16384 x 9600
Dimensions	28.85 x 41 mm

Environment

Operating Temperature	-10 °C ~ 60 °C Humidity 20% RH ~ 80% RH (Non Condensing)
Storage Temperature	-10 °C ~ 65 °C Humidity 10% RH ~ 85% RH (Non Condensing)
Operating Humidity (RH)	10 to 90% (non-condensing)
IP Rating	Front IP65 Dust & Water Resistant

Supported OS

Windows	Win 10, Win 8, Win 7
Linux	Kernel 3.0.8 and up (x86, 32/bit with X-Window)

Warranty

Warranty	1-year standard Extended warranty options available
-----------------	--

* Specification subject to change without notice. Updated: February 7, 2022.

CI-AD070-01 AD Board Specifications

Features

Input Signal	HDMI, VGA(optional)
Support Mode	DOS, VGA, SVGA, XGA, WXGA, SXGA, SXGA+, WXGA+, WSXGA+, UXGA, WUXGA, WUXGA+
Color depth	18bit / 24bit
H-Sync. Range	30-80KHz
V-Sync. Range	56-75Hz
Output Signal	2 channels LVDS, 6bit / 8bit color, NS / JEIDA mapping
Audio output	2W x 2
Key Pad	POWER, LEFT, RIGHT, MENU, SOURCE
OSD Menu	Brightness, Contrast, Gamma, Phase, H/V Position, OSD Position, Auto, Reset, Color temperature
Power Supply	12 V(+/-0.6V)(DC)
Power Mode	Active, Standby, Off
Power Consumption	3.0 Watt (No load), Standby < 3W
Plug and Play	Supported

Interface and Electrical

Keypad/LED (CN1)	Keypad, LED interface
Backlight Control(CN4)	Backlight ON/OFF and dimming control
Panel VCC (JP7)	LCD Panel VCC (12V, 5V, 3.3V)
DC JACK(DCJ1)	DC +12V input
AUX(JP11)	Phone Jack Stereo audio input (optional)
Speaker(JP4)	Stereo Speaker
VGA(CN3)	VGA input(optional)
HDMI(JP3)	HDMI input
USB-B(USB4)	USB-B to host
Touch Panel USB(J2)	USB to Touch Panel

Environment

Heavy pressure prevented

Electronics discharge protection

Maximum Humidity	80%
Storage Temperature	-10 ~ +60 degree
Operating Temperature	0 ~ +40 degree

* Specification subject to change without notice. Updated: February 7, 2022

GMB-L3APL300 Specifications

Features

CPU	Intel® Atom™ E3930 Processor
BIOS	AMI UEFI BIOS
OS Support	Windows®10 IoT Enterprise LTSC 2019 64 bit
System Memory	Up to 8 GB in 1 slots DDR3L SO-DIMM sockets
Storage	1 x SATA ports(SATA 6Gb/s)
Expansion Interface	2 x mini-PCIe Socket (Full size support mSATA/ Half size support WiFi/BT)
Ethernet	2 x Gigabit Ethernet Intel® i210 IT
High Drive GPIO	1 x pin-header for GPIO (8bit in/out)
Power Supply Voltage	12~24V DC in

Graphic

Controller: Intel® HD Graphics 505	- LVDS: Supports Dual Channel 24bit up to resolution 1920 x 1200 - DP: Supports DP up to resolution 4096 x 2160 - HDMI: Supports HDMI up to resolution 3840 x 2160
---	--

I/O Interface

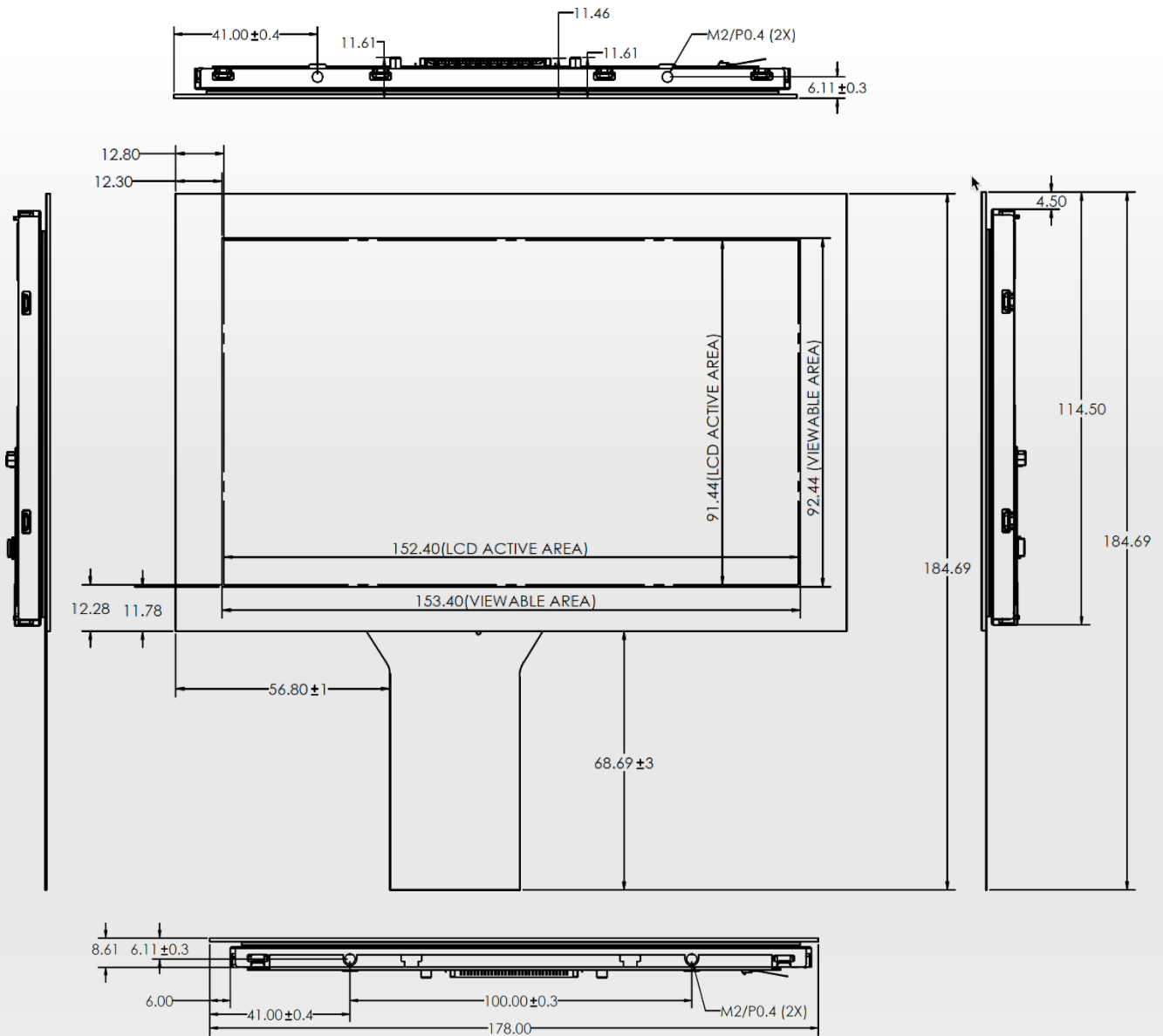
Serial Port	6 (1 x RS-232/422/485 with DP9 connector on Rear I/O (selected by BIOS) and 5 x RS-232 with on board pin header)
USB Port	6 (2 x USB3.0 on rear I/O and 4 x USB3.0 on board header)
Audio Interface	Audio jack on rear I/O with Line-out Line-in, Line-out, and Mic-in on board pin header

Environment

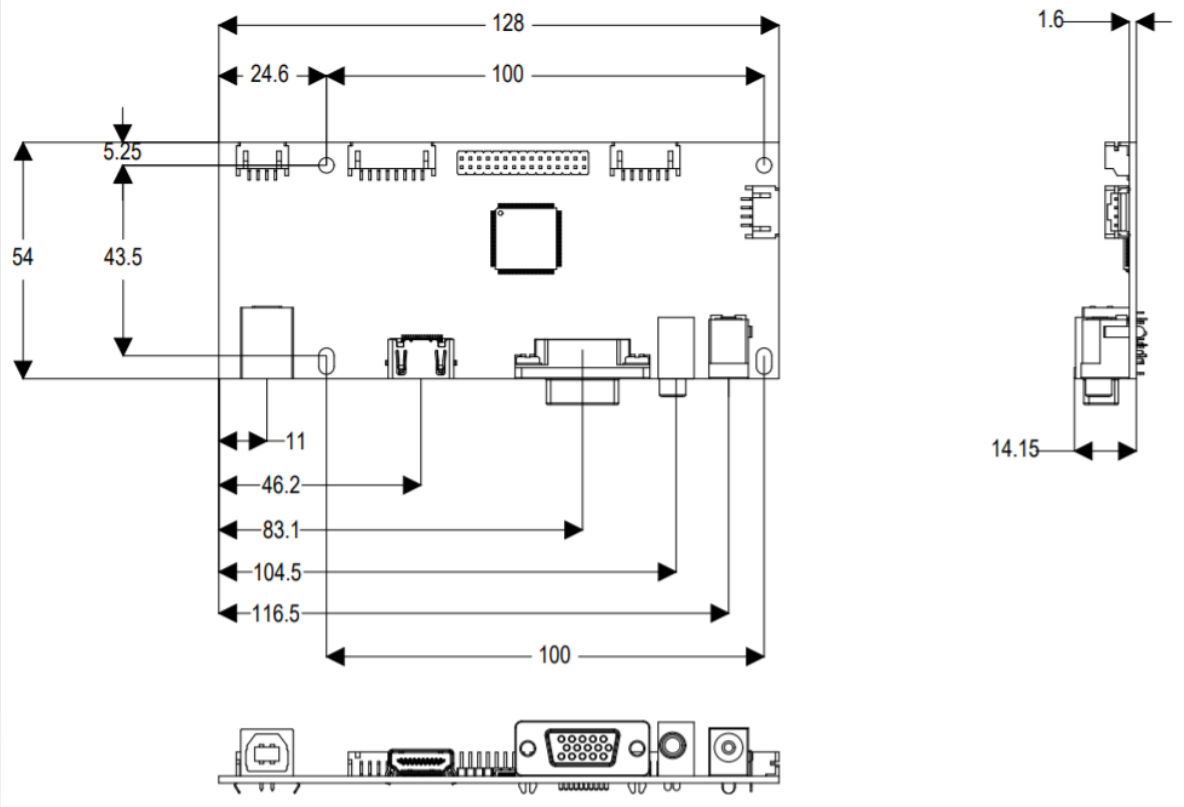
Operation Temperature	2 x Gigabit Ethernet Intel® i210 IT
Storage Temperature	-40°C~85°C
Operating Humidity	5~95%, Non-condensing
Dimension	146(L) x 102(W) mm; 5.74"(L) x 4.02"(W)

* Specification subject to change without notice. Updated: February 7, 2022

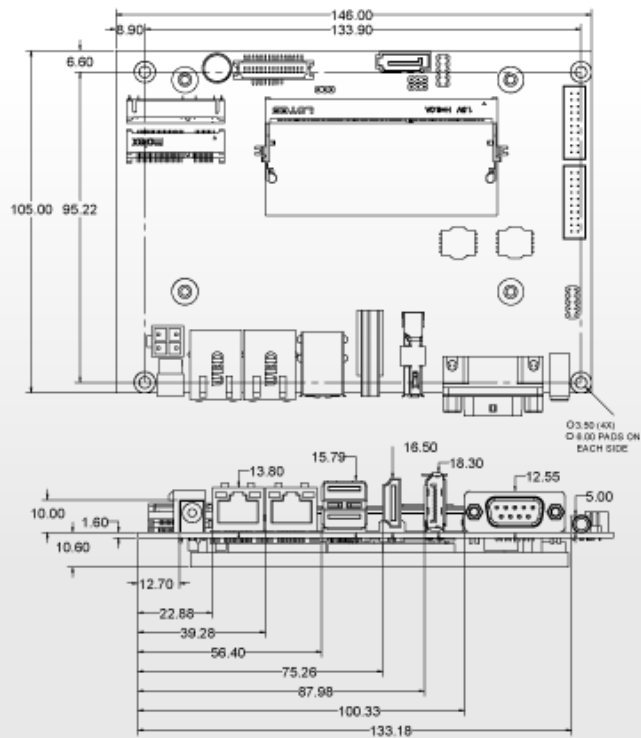
CI-DK070P Mechanical Drawing



CI-AD070-01 AD Board Mechanical Drawing



GMB-L3APL300 Mechanical Drawing



Ordering Information

Part Number	Description
CI-DK070P50WV	7" 800x480, 500nits, -10 °C ~ 60 °C, 50K, PCAP Touch Industrial Display Kit
CI-AD070-01	AD Board kit including OSD keypad, LVDS cable, LED cable, OSD cable and USB cable

Packing List	
1 x	7" 800x480, 500nits, -10 °C ~ 60 °C, 50K, PCAP Touch Industrial Display
1 x	Touch Controller Daughter Board
1 x	USB Cable

Buy Online (U.S. Customer Only): www.ContecAmericas.com

Contec Americas Inc.
3991 Sarno Rd.
Melbourne, FL 32934

Toll Free: (888) 285-0172

Local: (321) 728-0172

Email: sales@us.contec.com

Global Website: www.Contec.com