

## PC-Card 1Ch RS-232C Serial I/O COM-1(PM)

This PC card is external equipment and serial I/O card of the PCMCIA 2.0/JEIDA 4.1 conformity which performs serial communication of RS-232C conformity.

It can be used after PCMCIA2.0/JEIDA 4.1 (PC Card Standard is included), being able to it has the serial port of RS-232C conformity of one channel by one sheet. Attached standard COM driver software [COM Setup Disk] by using it, it can access as a Windows or standard COM port for Linux.



At PC-9800 series, it cannot be used in MS-DOS mode.

### Features

- Since Plug & Play correspondence is carried out, the resource information on an I/O Address or IRQ is set up automatically.
- It corresponds to a maximum of 115,200bps high-speed communication.
- The baud rate of each channel can be set up by software.
- FIFO buffer of 16 bytes of transmission and 16 bytes of reception is carried.
- It can be used being able to mount a maximum of two sheets in the same personal computer.
- It can be used as Windows and a standard COM port of Linux by attached driver software.
- By the PC card attachment, the junction part of a PC card and a connection cable can be protected.

### Specification

Item	Specification
No. of Channels	1
Input Type	RS-232C (Non Isolated)
Transfer Method	Asynchronous serial transfer
Baud Rate	50 - 115,200bps <sup>*1</sup>
Data Length	5, 6, 7, 8 bits 1, 1.5, 2 stop bits <sup>*1</sup>
Parity Check	Even, odd, non-parity <sup>*1</sup>
Controller Chip	16550 or equivalent
Distance	1.5m Max.
Interrupt Requests	IRQ3~7, 9~12, 14, 15
I/O Addresses	8 Bit x 8 Port
Power Consumption	+5VDC 100mA Max.
Operating Temperature	0~50°C
Relative Humidity	20~90% (non-condensing)
Length	150mm
Dimensions	Type II
Weight	70g

<sup>\*1</sup> For details, refer to the data sheet for the NS16550 equivalent product.

## Support Software

### Attached support software

Standard COM driver software COM Setup Disk

It is the software for using the serial communication board of our company like the COM port (standard COM) of the main part of a personal computer by Windows or Linux.

It is possible to perform various serial communications, such as remote access service (RAS). However, it does not correspond to the power supply (UPS) non-cut the electric current off.

In Windows, it corresponds to the standard Win32API communication functions (CreateFile () and WriteFile(), ReadFile () and SetCommState(), etc.) for OS. It corresponds to communication control (MSComm) of Visual Basic.

In Linux, it is based on the standard tty driver for OS. It corresponds to the standard function of open () and close(), read () and write(), etc.

Environment of operation

The main correspondences OS Windows XP, 2000, NT, Me, 98, Linux, etc.

*Note!*

- The number of sheets which can be used simultaneously is to two sheets.

### Gratis download service

(Download (onerous) is possible from the homepage of our company.)

API Function Library API-PAC(W32)

It is the library software which offers the command to the hardware of our company in standard Win32API function (DLL) form for Windows. By the various programming languages which are supporting Win32API functions, such as Visual Basic, and Visual C/C++, the high-speed application software which harnessed the special feature of the hardware of our company can be created.

The newest driver and download service (<http://www.contec.co.jp/apipac/>) of difference file are also offered.

Environment of operation

Main correspondence OS Windows 2000, NT, Me, 98, etc

Main adaptation languages Visual C++, Borland C++, Visual Basic, etc.

Others The hard disk which has 20MB empty domain for every library software is required.

*Note!*

- They are the local functions which were original with our company as for this library, and were defined. (SioOpen () and SioWrite (), SioRead () and SioStatus (), etc. ) It is not compatible with the standard Win32API communication functions (CreateFile () and WriteFile () etc.) for OS.
- The number of sheets which can be used simultaneously is to two sheets.

### Optional support software

Collection for measurement systems development of ActiveX components ACX-PAC(W32)BP

It is the convenient measurement systems development tool for Windows in which the collection of examples which can be used immediately, and the collection (collection of software parts) of components which can program easily only by combining were mentioned.

Component for control of the input-and-output board (card) of our company is made the one package. Analog I/O, digital I/O, control of each interface of GPIB communication and X-Y graph display, and file preservation are possible.

Collection for measurement systems development of ActiveX components ACX-PAC(W32)AP

In addition to the function of ACX-PAC(W32)BP, components, such as display systems, such as various graph, switch, and lamp, and operation / analysis, serve as a package.

MS-DOS correspondence driver SUPPORT-PAC(PC)103

It is the driver software dealing with MS-DOS which supports the hardware of our company. Much high-class language is supported and the function to provide is supplied per command (function).

## Cable & Connector (Option)

### Cable (option)

RS-232C D-SUB9P straight cable (1.8m) :	RSS-9M/F
RS-232C D-SUB9P cross cable (1.8m) :	RSC-9F
RS-232C D-SUB25P straight cable (1.8m) :	RSS-25M/F
RS-232C D-SUB25P cross cable (1.8m) :	RSC-25F
RS-232C connector conversion straight cable	
(25M -> 9F, 1.8m) :	RSS-25M/9F
RS-232C connector conversion straight cable	
(25F -> 9M, 1.8m) :	RSS-25F/9M
RS-232C connector conversion cross cable	
(25F -> 9F, 1.8m) :	RSC-25F/9F

### Connector (option)

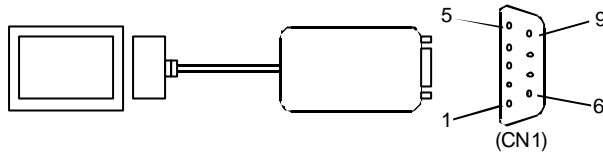
9pin D-SUB (male) connector Five-piece set :	CN5-D9M
9pin D-SUB (female) connector Five-piece set :	CN5-D9F
25pin D-SUB (male) connector Five-piece set :	
	CN5-D25M
25pin D-SUB (female) connector Five-piece set :	
	CN5-D25F

## Packing List

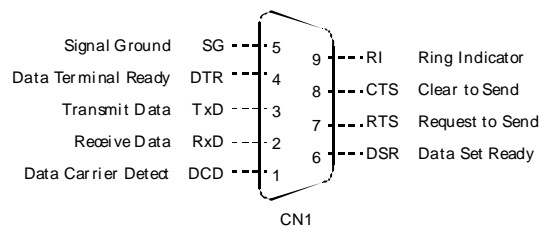
- COM (PM)Card - 1
- Connection Cable [CB-1R(PM)] - 1
- Diskette with Driver Software (3.5inch/1.44MB) - 1
- User's Guide (This Booklet) - 1

### Interface connector

It connects with external apparatus using the interface connector of a connection cable [CB-1R(PM)].



Installed Connector : 205B-09M SPBBE3 COXOC (Male)  
 Suitable Cable : 17JE-13090-02(D8C) DDK (Female)



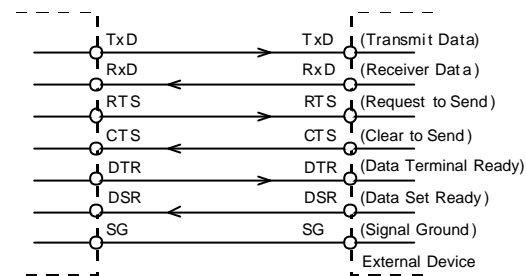
### Cable (option)

RS-232C D-SUB9P straight cable (1.8m) RSS-9M/F  
 RS-232C D-SUB9P cross cable (1.8m) RSC-9F

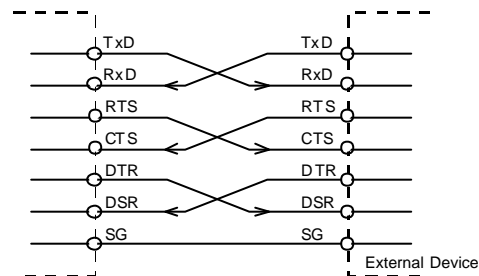
### Cable type and Connection Sample

The cables which use connection of RS-232C interface by the apparatus connected like a modem or a computer (personal computer) may differ. Therefore, a cable should prepare a straight type or a crossing (reverse) type by the classification (specification) after checking the specification of the external apparatus to connect. Furthermore, when there is the necessity for signal line processing within a connector, please unite with specification and process appropriately.

#### The example of connection with a modem (straight cable)



#### The example of connection with a personal computer (cross cable)



#### The example of connection with apparatus

