

PC-card 2Ch RS-232C Serial I/O Card

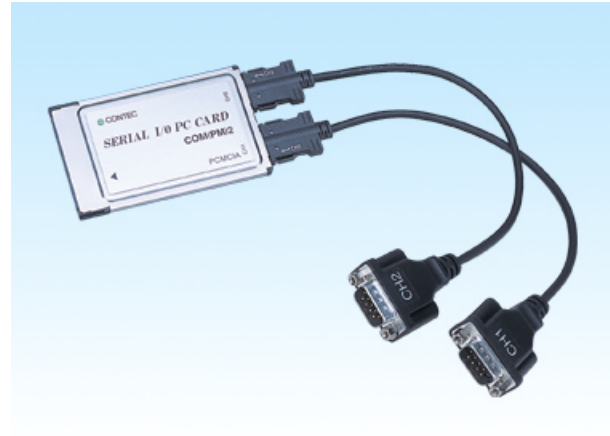
COM-2(PM)

This PC card is external equipment and serial I/O card of the PCMCIA 2.0/JEIDA 4.1 conformity which performs serial communication of RS-232C conformity.

It can be used after PCMCIA2.0/JEIDA 4.1 (PC Card Standard is included), being able to insert in the PC card slot of conformity.

It has the serial port of RS-232C conformity of two channels with one PC card.

Attached standard COM driver software [COM Setup Disk] by using it, it can access as a Windows or standard COM port for Linux.

**Features**

- Since Plug & Play correspondence is carried out, the resource information on an I/O Address or IRQ is set up automatically.
- It corresponds to a maximum of 115,200bps high-speed communication.
- The baud rate of each channel can be set up by software.
- FIFO buffer of 16 bytes of transmission and 16 bytes of reception is carried for every channel.
- It can be used being able to mount a maximum of two sheets in the same personal computer. (Using by Windows XP/2000)
- It can be used as Windows and a standard COM port of Linux by attached driver software.
- By the PC card attachment, the junction part of a PC card and a connection cable can be protected.

Specification

Item	Specification
No. of Channel	2
Input Type	RS-232C
Transfer Method	Asynchronous serial transmission
Baud Rate	50~115,200bps ^{*)}
Data Length	5, 6, 7, 8 bits 1, 1.5, 2 stop bits
Parity Check	Even, odd, no-parity
RS-232C Controller	16550 or equivalent
RS-232C signal extendible distance	15m Max.
Interrupt	One point of either IRQ3~7, 9~12, 14, 15
I/O Address	8 bits x 16
Power Consumption	+5DVC 170mA Max.
Operation Conditions	0~50°C, 20~90%(No condensation)
Card Type	PCMCIA/JEIDA TypeII
Card Weight	90g

*1 When transmitting data at high normal transmission might not be possible depending on the environment, such as the type of other device and cable length.

Support Software

Attached support software

Standard COM driver software COM Setup Disk
It is the software for using the serial communication board of our company like the COM port (standard COM) of the main part of a personal computer by Windows or Linux.
It is possible to perform various serial communications, such as remote access service (RAS). However, it does not correspond to the power supply (UPS) non-cut the electric current off.

In Windows, it corresponds to the standard Win32API communication functions (CreateFile () and WriteFile(), ReadFile () and SetCommState(), etc.) for OS. It corresponds to communication control (MSComm) of Visual Basic.

In Linux, it is based on the standard type driver for OS. It corresponds to the standard function of open () and close(), read () and write(), etc.

Main correspondence OS Windows XP, 2000, NT, Me, 98, Linux, etc.

Note!

- The number of sheets which can be used simultaneously is to two sheets. (Windows NT/Me/98/95 are to one sheet.)

Gratis download service

API Function Library API-PAC(W32) (Download (no charge) is possible from the homepage of our company)
It is the library software which offers the command to the hardware of our company in standard Win32API function (DLL) form for Windows. By the various programming languages which are supporting Win32API functions, such as Visual Basic, and Visual C/C++, the high-speed application software which harnessed the special feature of the hardware of our company can be created.

The newest driver and download service (<http://www.contec.co.jp/apipac/>) of difference file are also offered.

For details, please refer to a homepage.

Main correspondence OS Windows XP, 2000, NT, Me, 98, etc

Main adaptation languages Visual C/C++, Borland C++, Visual Basic, etc.

Others The hard disk which has 20MB empty domain for every library software is required.

Note!

- They are the local functions which were original with our company as for this library, and were defined. (SioOpen () and SioWrite (), SioRead () and SioStatus (), etc.) It is not compatible with the standard Win32API communication functions (CreateFile () and WriteFile () etc.) for OS.

The number of sheets which can be used simultaneously is to

two sheets. (Windows NT/Me/98/95 are to one sheet.)

Optional Support Software

Collection for measurement systems development of ActiveX components ACX-PAC(W32)BP

It is the convenient measurement systems development tool for Windows in which the collection of examples which can be used immediately, and the collection (collection of software parts) of components which can program easily only by combining were mentioned.

Component for control of the input-and-output board (card) of our company is made the one package. Analog I/O, digital I/O, control of each interface of GPIB communication and X-Y graph display, and file preservation are possible.

Collection for measurement systems development of ActiveX components ACX-PAC(W32)AP

In addition to the function of ACX-PAC(W32)BP, components, such as display systems, such as various graph, switch, and lamp, and operation / analysis, serve as a package.

Cable & Connector (Option)

Cable (option)

RS-232C D-SUB9P Straight cable(1.8m):	RSS-9M/F
RS-232C D-SUB9P Cross cable(1.8m):	RSC-9F
RS-232C D-SUB25P Straight cable(1.8m):	RSS-25M/F
RS-232C D-SUB25P Cross cable(1.8m):	RSC-25F
RS-232C connector conversion straight cable (25M to 9F, 1.8m):	RSS-25M/9F
RS-232C connector conversion straight cable (25F to 9M, 1.8m):	RSS-25F/9M
RS-232C connect or conversion cross cable (25F to 9F, 1.8m):	RSC-25F/9F

Connector (option)

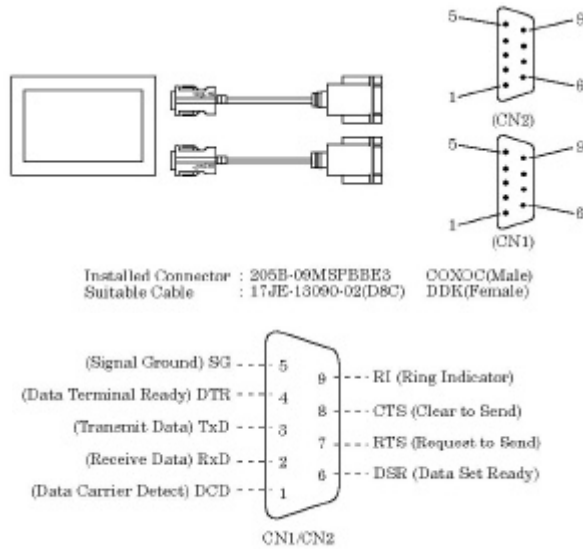
9pin D-SUB(male) connector Five-piece set:	CN5-D9M
9pin D-SUB(female) connector Five-piece set:	CN5-D9F
25pin D-SUB(male) connector Five-piece set:	CN5-D25M
25pin D-SUB(female) connector Five-piece set:	CN5-D25F

Packing List

- COM (PM)2 Card - 1
- Connection Cable [CBPM -2R(PM)] - 1set
- PCMCIA Windows COM Driver (3.5inch/1.44MB) - 1
- PC-Card Attachment2(CARD-AT2) - 1set
- COM-2(PM) User's Guide (This Booklet) - 1

External Connection

It connects with external apparatus using interface connector of Connection cable [CBPM -2R].



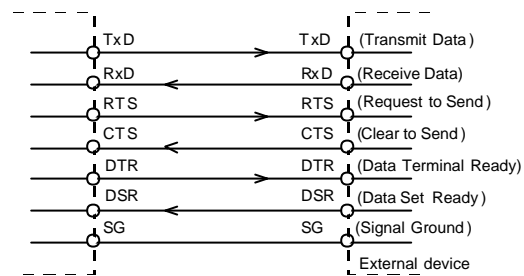
Cable(option)

RS-232C D-SUB9P Straight cable(1.8m) RSS-9M/F
RS-232C D-SUB9P Cross cable(1.8m) RSC-9F

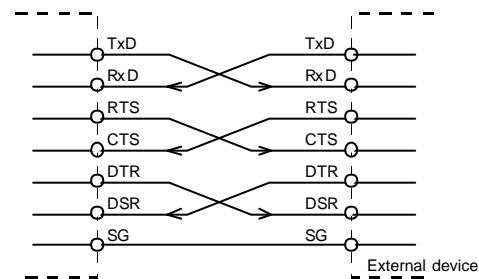
Cable type and Connection Sample

The cables which use connection of RS-232C interface by the apparatus connected like a modem or a computer (personal computer) may differ. Therefore, a cable should prepare straight type or crossing (reverse) type by the classification (specification) after checking the specification of the external equipment to connect. Furthermore, when there is the necessity for signal line processing within a connector, please unite with specification and process appropriately.

The example of connection with modem (Straight Cable)



The example of connection with a personal computer (Crossing Cable)



The example of connection with apparatus

