

A one end connector shield cable  
for 96 pin Half-Pitch connectors

**PCA96PS-\*\*P**



\* Specifications, color and design of the products are subject to change without notice.

Model	Length	Weight
PCA96PS-0.5P	500 mm	200g
PCA96PS-1.5P	1500 mm	420g
PCA96PS-3P	3000 mm	750g
PCA96PS-5P	5000 mm	1170g

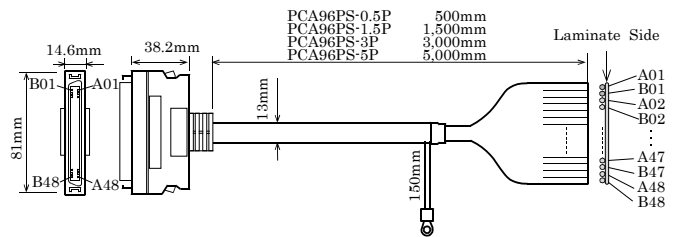
**Specification**

Item	Specification
Connector used	96-pin half-pitch, female connector PCR-E96FA[HONDA] or equivalent
Cable	96 core shield cable(48pair). Conductor size: AWG#30 Conductor composition: 7pcs/0.10mm UL2464
Round terminal	V1.25-3(JST) or equivalent
Specification of wire Terminals	It lamination-processes in 1.27mm pitch.
Weight	200g(PCA96PS-0.5P), 420g(PCA96PS-1.5P), 750g(PCA96PS-3P), 1170g(PCA96PS-5P)
Line core color	Line core color depends on the product revision. Please refer to the next page
Standard	CE(RoHS Directive), UKCA

These products are cables for connecting a 96-pin half-pitch connector on CONTEC board with other devices.

- \* The contents in this document are subject to change without notice.
- \* Visit the CONTEC website to check the latest details in the document.
- \* The information in the data sheets is as of January, 2024.

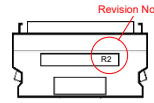
**Physical Dimensions**



# Connection Diagram

**Line core color depends on the product revision.**

**Revision No., please refer to the label of the connector.**



Connector Pin No.	Revision No. Rxx line core color (marking No./color)	< Revision No. N/A > < line core color (marking No./color) >	Wire No.
A01	White (10Red)	<Orange (1Red)>	A01
B01	White (10Black)	<Orange (1Black)>	B01
A02	Gray (10Red)	<Orange (2Red)>	A02
B02	Gray (10Black)	<Orange (2Black)>	B02
A03	Orange (10Red)	<Orange (3Red)>	A03
B03	Orange (10Black)	<Orange (3Black)>	B03
A04	Pink (9Red)	<Orange (4Red)>	A04
B04	Pink (9Black)	<Orange (4Black)>	B04
A05	Yellow (9Red)	<Orange (5Red)>	A05
B05	Yellow (9Black)	<Orange (5Black)>	B05
A06	White (9Red)	<Gray (1Red)>	A06
B06	White (9Black)	<Gray (1Black)>	B06
A07	Gray (9Red)	<Gray (2Red)>	A07
B07	Gray (9Black)	<Gray (2Black)>	B07
A08	Orange (9Red)	<Gray (3Red)>	A08
B08	Orange (9Black)	<Gray (3Black)>	B08
A09	Pink (8Red)	<Gray (4Red)>	A09
B09	Pink (8Black)	<Gray (4Black)>	B09
A10	Yellow (8Red)	<Gray (5Red)>	A10
B10	Yellow (8Black)	<Gray (5Black)>	B10
A11	White (8Red)	<White (1Red)>	A11
B11	White (8Black)	<White (1Black)>	B11
A12	Gray (8Red)	<White (2Red)>	A12
B12	Gray (8Black)	<White (2Black)>	B12
A13	Orange (8Red)	<White (3Red)>	A13
B13	Orange (8Black)	<White (3Black)>	B13
A14	Pink (7Red)	<White (4Red)>	A14
B14	Pink (7Black)	<White (4Black)>	B14
A15	Yellow (7Red)	<White (5Red)>	A15
B15	Yellow (7Black)	<White (5Black)>	B15
A16	White (7Red)	<Yellow (1Red)>	A16
B16	White (7Black)	<Yellow (1Black)>	B16
A17	Gray (7Red)	<Yellow (2Red)>	A17
B17	Gray (7Black)	<Yellow (2Black)>	B17
A18	Orange (7Red)	<Yellow (3Red)>	A18
B18	Orange (7Black)	<Yellow (3Black)>	B18
A19	Pink (6Red)	<Yellow (4Red)>	A19
B19	Pink (6Black)	<Yellow (4Black)>	B19
A20	Yellow (6Red)	<Yellow (5Red)>	A20
B20	Yellow (6Black)	<Yellow (5Black)>	B20
A21	White (6Red)	<Pink (1Red)>	A21
B21	White (6Black)	<Pink (1Black)>	B21
A22	Gray (6Red)	<Pink (2Red)>	A22
B22	Gray (6Black)	<Pink (2Black)>	B22
A23	Orange (6Red)	<Pink (3Red)>	A23
B23	Orange (6Black)	<Pink (3Black)>	B23
A24	Pink (5Red)	<Pink (4Red)>	A24
B24	Pink (5Black)	<Pink (4Black)>	B24

Connector Pin No.	Revision No. Rxx line core color (marking No./color)	< Revision No. N/A > < line core color (marking No./color) >	Wire No.
A25	Yellow (5Red)	<Pink (5Red)>	A25
B25	Yellow (5Black)	<Pink (5Black)>	B25
A26	White (5Red)	<Brown (1White)>	A26
B26	White (5Black)	<Brown (1Black)>	B26
A27	Gray (5Red)	<Brown (2White)>	A27
B27	Gray (5Black)	<Brown (2Black)>	B27
A28	Orange (5Red)	<Brown (3White)>	A28
B28	Orange (5Black)	<Brown (3Black)>	B28
A29	Pink (4Red)	<Brown (4White)>	A29
B29	Pink (4Black)	<Brown (4Black)>	B29
A30	Yellow (4Red)	<Brown (5White)>	A30
B30	Yellow (4Black)	<Brown (5Black)>	B30
A31	White (4Red)	<Red (1White)>	A31
B31	White (4Black)	<Red (1Black)>	B31
A32	Gray (4Red)	<Red (2White)>	A32
B32	Gray (4Black)	<Red (2Black)>	B32
A33	Orange (4Red)	<Red (3White)>	A33
B33	Orange (4Black)	<Red (3Black)>	B33
A34	Pink (3Red)	<Red (4White)>	A34
B34	Pink (3Black)	<Red (4Black)>	B34
A35	Yellow (3Red)	<Red (5White)>	A35
B35	Yellow (3Black)	<Red (5Black)>	B35
A36	White (3Red)	<Blue (1White)>	A36
B36	White (3Black)	<Blue (1Black)>	B36
A37	Gray (3Red)	<Blue (2White)>	A37
B37	Gray (3Black)	<Blue (2Black)>	B37
A38	Orange (3Red)	<Blue (3White)>	A38
B38	Orange (3Black)	<Blue (3Black)>	B38
A39	Pink (2Red)	<Blue (4White)>	A39
B39	Pink (2Black)	<Blue (4Black)>	B39
A40	Yellow (2Red)	<Blue (5White)>	A40
B40	Yellow (2Black)	<Blue (5Black)>	B40
A41	White (2Red)	<Green (1White)>	A41
B41	White (2Black)	<Green (1Black)>	B41
A42	Gray (2Red)	<Green (2White)>	A42
B42	Gray (2Black)	<Green (2Black)>	B42
A43	Orange (2Red)	<Green (3White)>	A43
B43	Orange (2Black)	<Green (3Black)>	B43
A44	Pink (1Red)	<Green (4White)>	A44
B44	Pink (1Black)	<Green (4Black)>	B44
A45	Yellow (1Red)	<Green (5White)>	A45
B45	Yellow (1Black)	<Green (5Black)>	B45
A46	White (1Red)	<L/Green (1Red)>	A46
B46	White (1Black)	<L/Green (1Black)>	B46
A47	Gray (1Red)	<L/Green (2Red)>	A47
B47	Gray (1Black)	<L/Green (2Black)>	B47
A48	Orange (1Red)	<L/Green (3Red)>	A48
B48	Orange (1Black)	<L/Green (3Black)>	B48

Revision No. R2 or higher :  
The marking No. shows  
the below signs.

No	signs
1	-
2	--
3	---
4	----
5	-----
6	-----
7	-----
8	-----
9	-----
10	-----

Revision No. N/A :  
The marking No. shows  
the below signs.

No	signs
1	-
2	--
3	---
4	----
5	-----

Rxx ... xx indicates the revision  
number.

Shield ————— Round Terminal